

Willy Wonka e la fabbrica di cioccolato

Berlin Friedrichshain, EG to rent

Object ID: CaB 54



Living area approx.: **29 m²** - Zimmer: **1**



Willy Wonka e la fabbrica di cioccolato

Object ID	CaB 54
Property Type	Apartment
Address	(Friedrichshain) 10245 Berlin
Living area approx:	29 m ²
Geschossflächenzahl	4500
Zimmer	1
Wohn-Schlafzimmer	1
Heating type	Central heating
Primary energy supplier	Gas
Available from	14.10.2024
Available until	31.12.2099
Deposit	1,500.00 EUR 1.500,00
Flat rate rental	920.00 EUR



Objektbeschreibung

You'll find the trendy 27 sqm apartment Willy Wonka on the ground floor, in the quiet back part of an attractive historic building. The combined living room and bedroom provides a spacious loft bed with a comfortable double bed, a cosy sofa bed underneath, a cupboard to create storage space and a pleasant dining area in front of the window. The separate fitted kitchen is very well equipped, the modern bathroom offers a shower. The eye-catcher of this special accommodation is surely the piece of original brick wall with a big mirror attached to it which optically enlarges the room. The tastefully chosen furniture and accessories (being mainly white, purple and black) give this special accommodation a very young and dynamic touch which perfectly matches with the trendyness of the district Friedrichshain.

Energy certificate

Energy certificate type	Bedarfsausweis
Date of issue	11.12.2017
Valid until	12-2027
Primary energy source	Gas
Energy demand	92.30 kWh/(m ² ·a)
Energy efficiency class	C





Location

Friedrichshain is a very young and trendy neighborhood. There are countless cafés and restaurants, particularly around the famous Boxhagener Platz where a flea market is held on weekends. Friedrichshain is very popular for its lively nightlife with many clubs and bars. Being a very large district there are also many quiet little streets and you'll find plenty of possibilities to chill: the big public parks - Volkspark Friedrichshain and Treptower Park along the beautiful river Spree – invite to enjoy long walks and leisure time.

S-Bahn, subway nr. 1 + 5, tram, bus

Ca. 20 mins to Hauptbahnhof

Ca. 10 mins to Alexanderplatz

Ca. 50 min to Airport BER





Bild 1



Bild 2

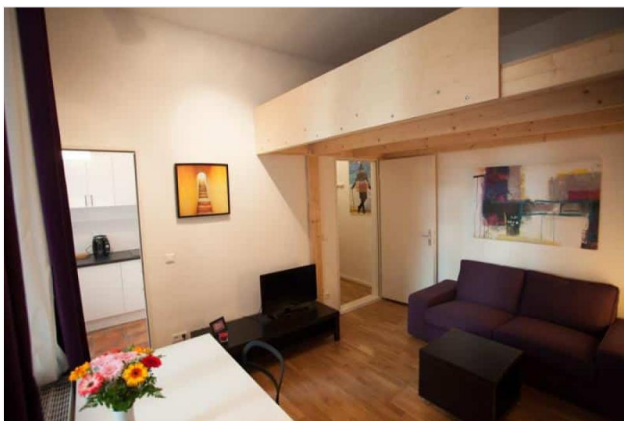


Bild 3

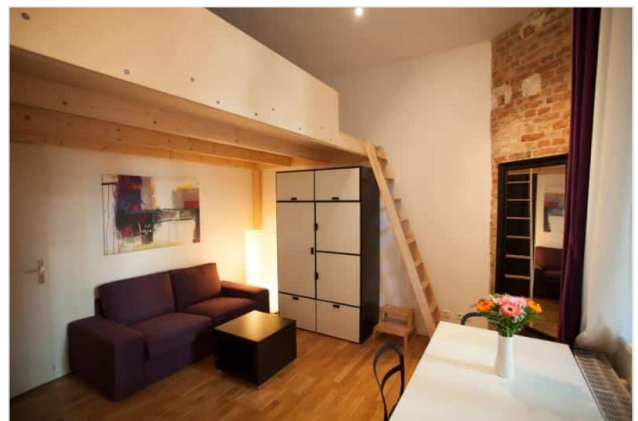


Bild 4



Bild 5



Bild 6



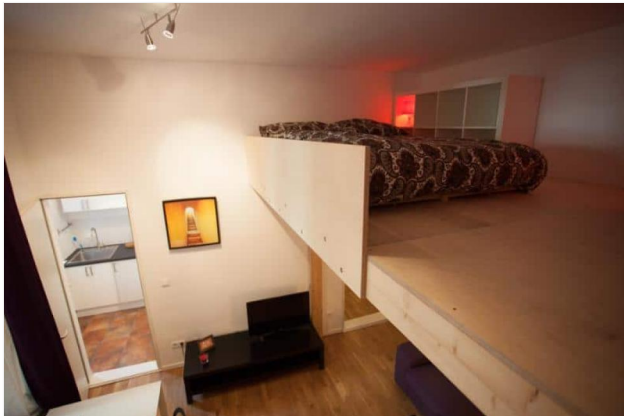


Bild 7



Bild 8



Bild 9



Bild 10

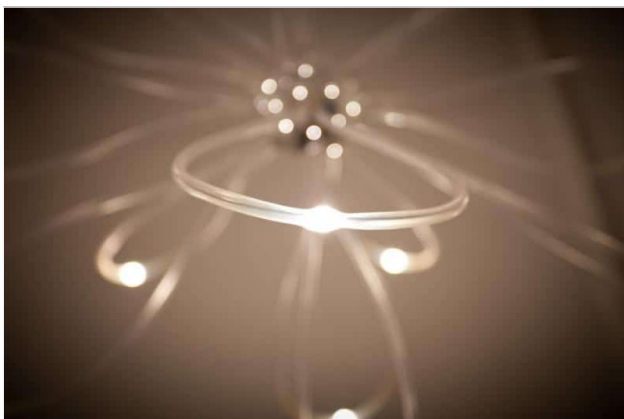


Bild 11

