

# The great Gatsby

Berlin Schöneberg, EG to rent

Object ID: CaB 108



Living area approx.: **172 m<sup>2</sup>** - Zimmer: **4.5**



## The great Gatsby

Object ID	CaB 108
Property Type	Apartment
Address	(Schöneberg) 10777 Berlin
Living area approx:	172 m²
Geschossflächenzahl	6000
Zimmer	4.5
Wohn-Schlafzimmer	4.5
Balconies	1
Heating type	Central heating
Primary energy supplier	Teleheating
Year of construction	1904
Last modernization	2011
Available from	02.10.2024
Available until	31.12.2099
Features	Balcony, Built-in kitchen, Cellar, Garden usage, Kabel-/Sat-TV, Parkettboden
Deposit	7,040.00 EUR 7.040,00
Flat rate rental	3,600.00 EUR



## Objektbeschreibung

The Great Gatsby (ca. 172 sqm) has a special charm with its 4m high ceilings and old building character. Due to the perfect floor plan (3 bedrooms, one of which has its own bathroom, a TV-room, a very large and elegant living-dining area, 2 bathrooms, one of which has a double bed) the flat is suitable for families.

The living area is equipped with a modern couch. The kitchen-living room is modern and fully equipped. The passage room to the sleeping area of the flat has been converted into a relax TV corner. Very beautiful: 2 terraces, one to the wide and friendly courtyard (ca. 20 sqm), the other to the quiet street (ca. 9 sqm), with a small garden area.

## Energy certificate

Energy certificate type	Verbrauchsausweis
Date of issue	04.12.2018
Valid until	12-2028
Year of construction	1904
Primary energy source	Teleheating
Final energy consumption	51.50 kWh/(m <sup>2</sup> ·a)
Energy efficiency class	B





## Location

Schöneberg is one of the most diversified neighborhoods in Berlin: beautiful Wilhelminian style buildings and a very colourful, lively and open-minded scene meet in perfect harmony. There are very nice and well-kept parks, countless bars, clubs, restaurants, cafés and little boutiques. A very popular farmer's market is held on Winterfeld Platz twice a week and the well-known shopping mile Ku'damm with its famous KaDeWe is also in Schöneberg.

S-Bahn, subway nr. 2 + 3 + 4 + 7, bus

ca. 25 mins to Hauptbahnhof

ca. 15 mins to Brandenburger Tor

ca. 45 mins to Airport BER





Bild 1



Bild 2



Bild 3

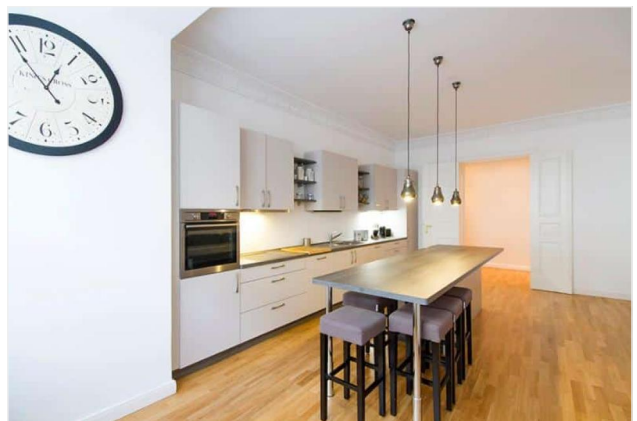


Bild 4



Bild 5

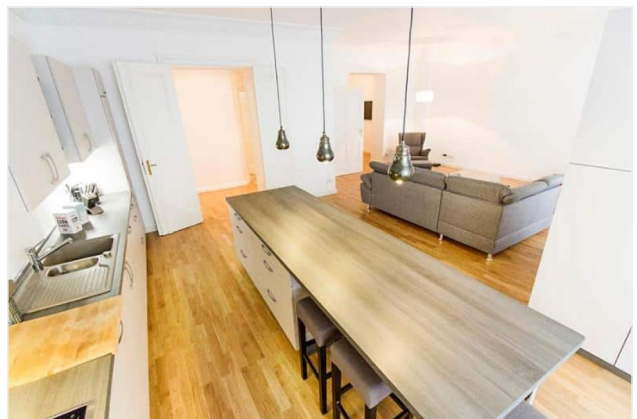


Bild 6







Bild 7



Bild 8



Bild 9



Bild 10

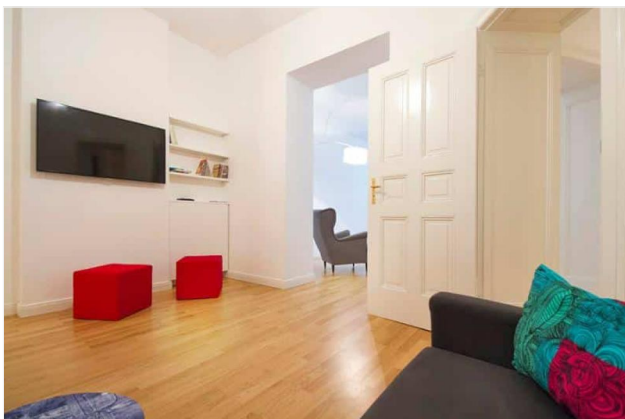


Bild 11

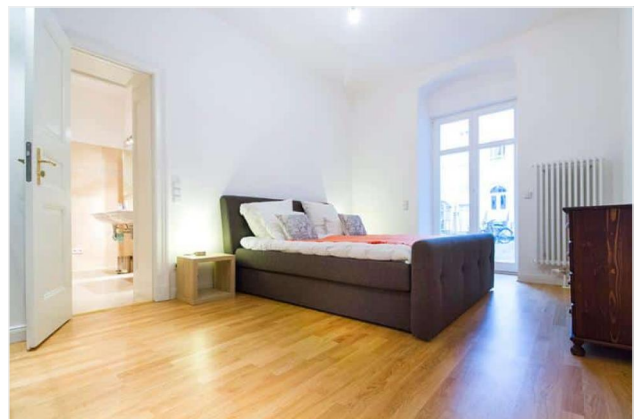


Bild 12





Bild 13



Bild 14

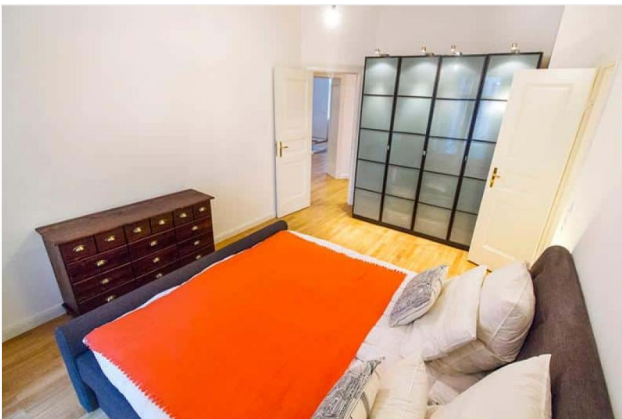


Bild 15



Bild 16



Bild 17



Bild 18







Bild 19



Bild 20



Bild 21

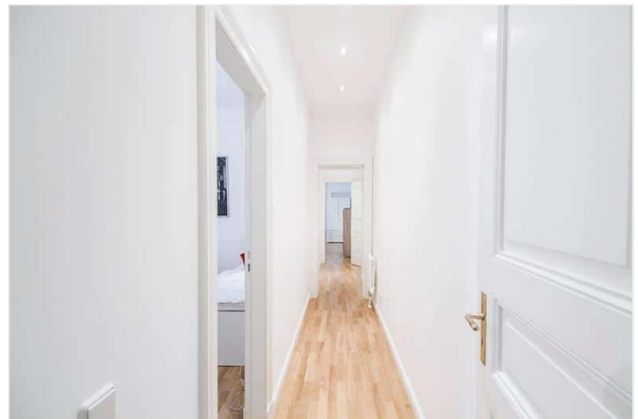


Bild 22



Bild 23



Bild 24







Bild 25



Bild 26



Bild 27



Bild 28



Bild 29

