

Stately Living at Hirschbrunnen – Schöneberg

Berlin Schöneberg, 4. OG to rent

Object ID: CaB 900



Living area approx.: **195 m²** - Zimmer: **6**



Stately Living at Hirschbrunnen – Schöneberg

Object ID	CaB 900
Property Type	Apartment
Address	(Schöneberg) 10825 Berlin
Floor	4
Living area approx:	195 m²
Zimmer	6
Schlafzimmer	2
Wohn-Schlafzimmer	6
Bathrooms	2
Separate WC	2
Balconies	1
Year of construction	1906
Features	Luxury
Available from	07.12.2023
Available until	31.12.2099
Features	Balcony, Built-in kitchen, Chimney, Fully furnished, Guest WC, Kabel-/Sat-TV, Lift, Separate WC
Deposit	10,000.00 EUR 10.000,00
Flat rate rental	4,930.00 EUR





Objektbeschreibung

The apartment, covering approximately 195 square meters, exudes a special charm with its 4-meter high ceilings and historic character. Thanks to its perfect layout, it offers an inviting atmosphere. It comprises 2 bedrooms, one of which has its own bathroom with a separate shower area. Particularly noteworthy is the spacious library with a balcony, serving as a workspace. This room seamlessly connects to the cozy living room, featuring a small terrace with a view of the Schöneberg Town Hall.

A modern fireplace links this room to the open-plan kitchen, equipped with high-end appliances that invite cooking and celebration.

The private section includes a master bedroom with an ensuite bathroom, a utility room (fitted with a washing machine and dryer) that also serves as a dressing room, and a well-equipped fitness room with small exercise equipment.





Location

The district of Schöneberg is one of the most diverse districts in Berlin: beautiful Wilhelminian style buildings and a very colourful picture of a lively, cosmopolitan scene come together very harmoniously here. There are several beautiful parks in Schöneberg, countless places to go out, restaurants, cafés, bars and smaller boutiques, and a large market is held twice a week on Winterfeldplatz. Berlin's most famous shopping mile, the Ku'damm with the world-famous KaDeWe department store, is also located in Schöneberg.

S-Bahn, U2, U3, U4, U7, bus
approx. 25 min. to the main railway station
approx. 15 min. to Brandenburg Gate
approx. 45 min. to BER airport





Attachment (2).JPEG



Attachment.jpeg



Attachment-1 (4).JPEG



Attachment-1 (2).JPEG



Attachment-3.JPEG



Attachment-2 (1).JPEG





Attachment-1 (1).JPEG



Attachment (1).JPEG



Attachment-2 (3).JPEG



Attachment (4).JPEG

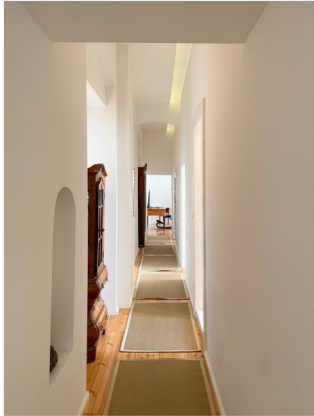


Attachment-3 (1).JPEG



Attachment-1 (3).JPEG





Attachment (5).JPEG



Attachment-3 (2).JPEG



Attachment-2 (4).JPEG



Attachment-1 (5).JPEG



Attachment-3 (3).JPEG



Attachment (6).JPEG

