

# Sliding doors

Berlin Prenzlauer Berg, 1. OG to rent

Object ID: CaB 36



Living area approx.: **29 m<sup>2</sup>** - Zimmer: **1**



## Sliding doors

Object ID	CaB 36
Property Type	Apartment
Address	(Prenzlauer Berg) 10407 Berlin
Floor	1
Living area approx:	29 m <sup>2</sup>
Landspace	1035
Geschossflächenzahl	7000
Zimmer	1
Wohn-Schlafzimmer	1
Heating type	Central heating
Primary energy supplier	Teleheating
Year of construction	1905
Available from	25.10.2024
Available until	31.12.2099
Deposit	1,980.00 EUR 1.980,00
Flat rate rental	990.00 EUR





## Objektbeschreibung

The ca. 29 sqm flat is located on the first floor of the quiet side wing of a historic building (no lift). The spacious combined living and bedroom contains a comfortable double bed, a cosy sofa, a desk and chair, a nice dining area and a small French balcony. The separate kitchen is completely equipped. The modern bathroom has a bathtub. T





## Location

Prenzlauer Berg is a very modern and laid-back neighborhood and very popular among young families and trendsetters. There are many pretty, colorful streets and squares: farmers markets, little boutiques, restaurants, cafés, bars and ice cream parlors invite for a stroll. To take a quick break from urban life you can go to the famous Mauerpark with its huge flea market on the weekends.

S-Bahn, subway nr. 2 and nr. 8, tram + bus,

ca. 8 mins to Alexanderplatz

ca. 15 mins to Hauptbahnhof

ca. 50 mins to the airport BER





Bild 1



Bild 2

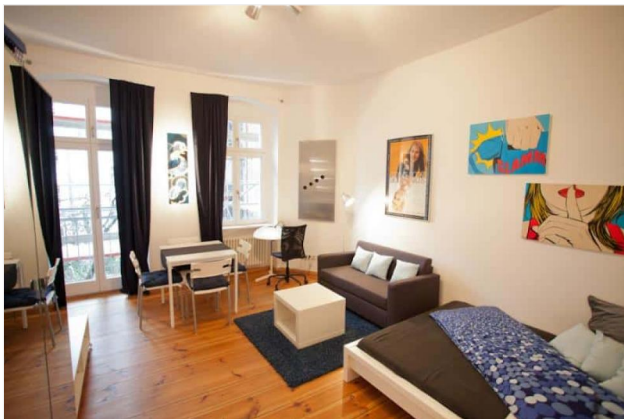


Bild 3

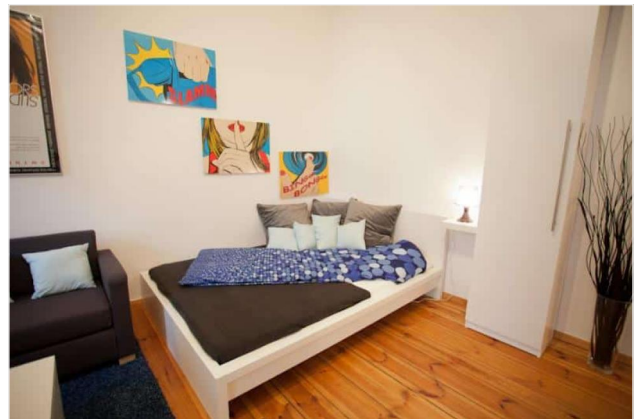


Bild 4

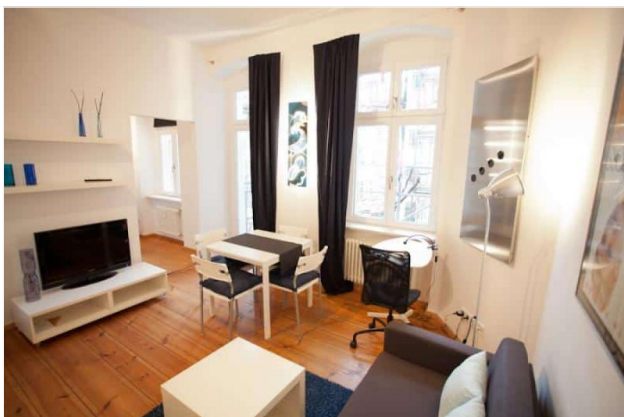


Bild 5



Bild 6





Bild 7



Bild 8



Bild 9



Bild 10

