

Rapunzel

Berlin Wilmersdorf, 1. OG to rent

Object ID: CaB 28



Living area approx.: **61 m²** - Zimmer: **2**



Rapunzel

Object ID	CaB 28
Property Type	Apartment
Address	(Wilmerdorf) 10717 Berlin
Floor	1
Living area approx:	61 m ²
Geschossflächenzahl	6000
Zimmer	2
Wohn-Schlafzimmer	2
Available from	29.10.2024
Available until	31.12.2099
Deposit	2,560.00 EUR 2.560,00
Flat rate rental	1,450.00 EUR





Objektbeschreibung

Rapunzel (ca. 60sqm) is located on the 2nd floor (without lift) in the quiet side wing of a historic building. The spacious living room has been cleverly divided into two main parts: the dining area, pleasantly positioned at the big window, offers a large dining table and a well-equipped modern open kitchen. The living area provides a sofa as well as an amply area to sit and relax on a platform. The separate bedroom is furnished with a comfortable double bed and a large wardrobe. The modern bathroom comes with a shower.





Location

Wilmerdorf is a small, quiet, upper class neighborhood of the old West-Berlin. There are many Wilhelminian style buildings and beautiful parks, e.g. the Volkspark Wilmerdorf. For long shopping tours you'll have the choice between cute little boutiques and the famous Kudamm with its world-renowned KaDeWe. The famed Zoologische Garten is directly adjacent to Wilmerdorf.

S-Bahn, subway nr. 2 + 3 + 7 + 9, bus

Ca. 20 mins to Hauptbahnhof

Ca. 25 mins to Alexanderplatz

Ca. 40 mins to Airport BER





Bild 1



Bild 2



Bild 3



Bild 4



Bild 5



Bild 6





Bild 7



Bild 8

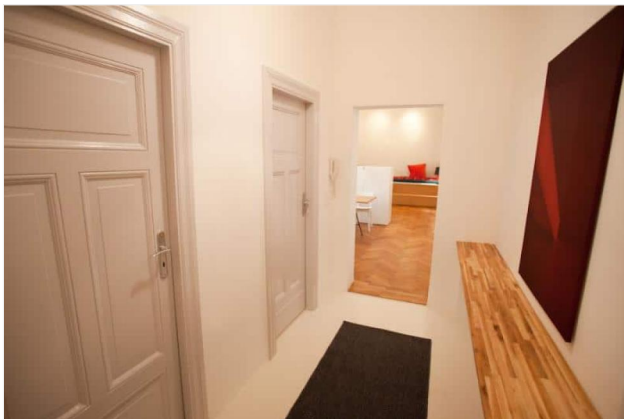


Bild 9



Bild 10



Bild 11

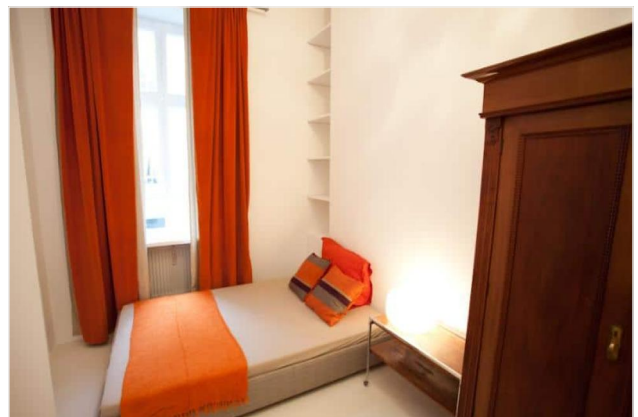


Bild 12

