

Moulin Rouge

Berlin Wilmersdorf, 2. OG to rent

Object ID: CaB 913



Living area approx.: **55 m²** - Zimmer: **2**



Moulin Rouge

Object ID	CaB 913
Property Type	Apartment
Address	(Wilmerdorf) 10707 Berlin
Floor	2
Etagen im Haus	2
Living area approx:	55 m ²
Zimmer	2
Schlafzimmer	1
Wohn-Schlafzimmer	2
Bathrooms	1
Separate WC	1
Haustiere	erlaubt
Available from	15.04.2024
Available until	0-00-00
Features	Built-in kitchen, Fully furnished, Lift, Separate WC
Flat rate rental	1,440.00 EUR





Objektbeschreibung

The apartment is located on the second floor (with elevator) in the heart of the Wilmersdorf district. This cozy and bright apartment of about 55 m2 is characterized by an inviting and fully equipped kitchen, a large bedroom with a double bed, and a living room with a sofa bed. The bathroom has a large shower and a bidet, which is a small luxury not common in Berlin apartments





Location

The district of Wilmersdorf is a quiet, bourgeois neighborhood in old West Berlin. Characteristic of this area are both the many Wilhelminian-style buildings, as well as the beautifully maintained parks, such as the Volkspark Wilmersdorf. In the neighborhood, there are many smaller boutiques, but large shopping excursions are also possible on Kurfürstendamm and at the world-famous KaDeWe. Adjacent to the neighborhood is the famous Zoological Garden.

S-Bahn , U2, U7, U9, Bus

Approximately 20 minutes to the main train station

Approximately 25 minutes to Alexanderplatz

Approximately 40 minutes to BER Airport.





_1077037



_1066886



_1066906



_1066916



_1066921



_1077040





_1066931



_1066926



_1066936



_1066941



_1066946



_1066951





_1066956



_1066976



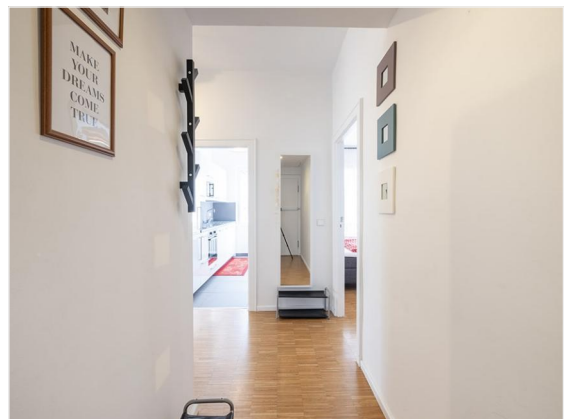
_1066996



_1077002



_1077007



_1066876





_1077042



_1077043

